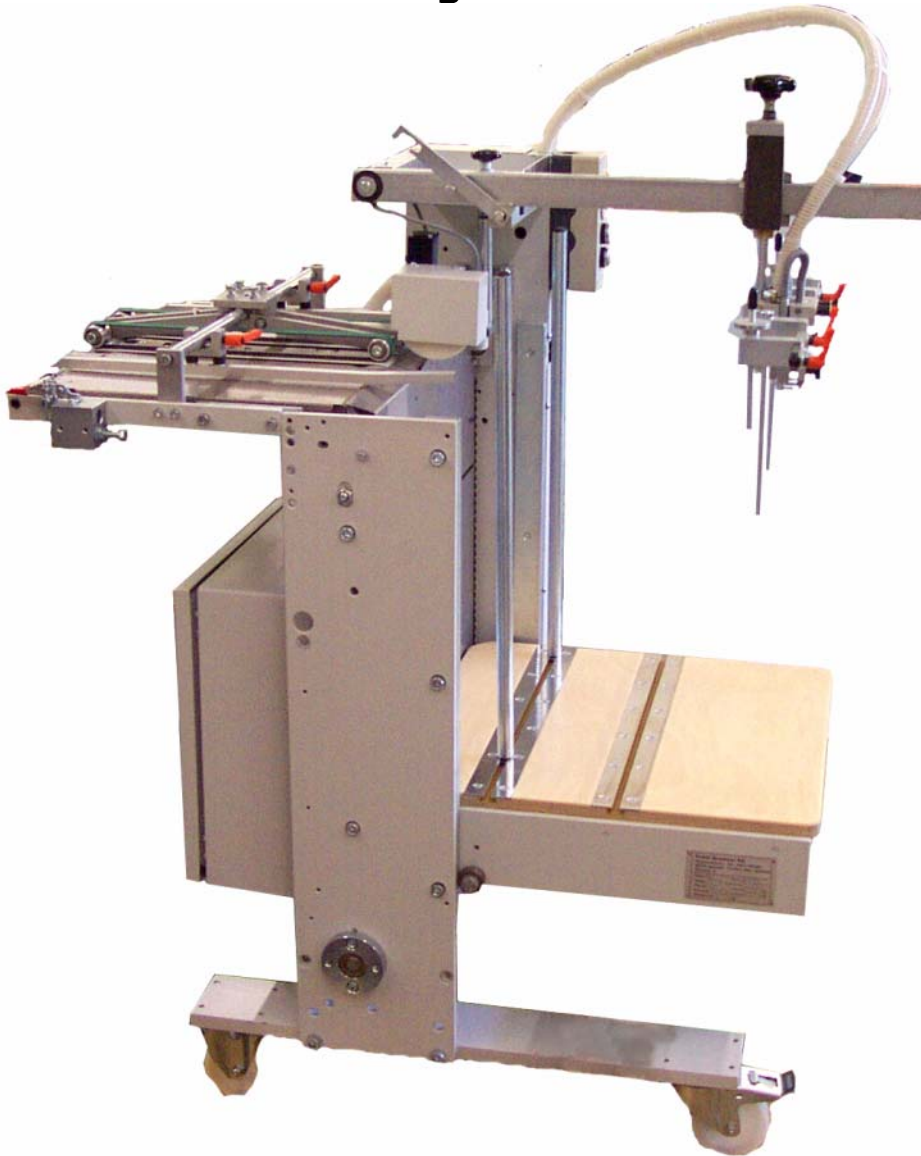


# GREMSEY

## FG – High Pile Feeder

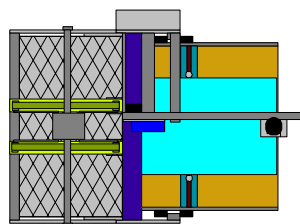
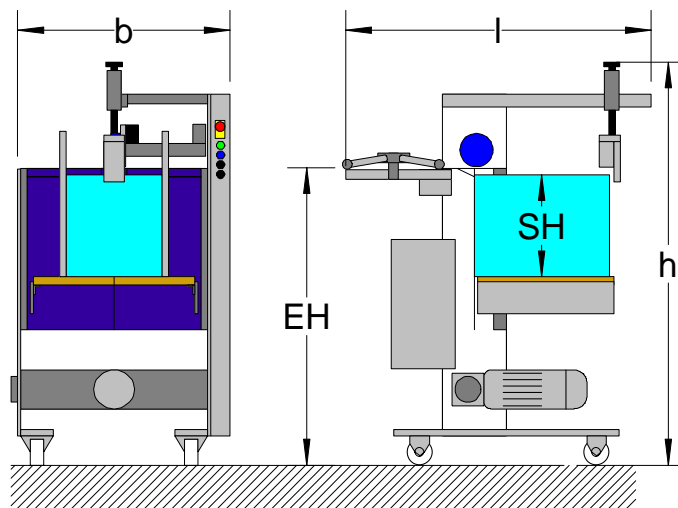


Single sheet feeder for simple applications  
High performance, up to 24,000 sheets per hour  
Large pile capacity, up to 19-1/2"  
Belted exit table is standard  
Optional with a SAT register table  
Reliable sheet separation with rear separation head and vacuum wheel  
Material (Paper, Film etc.) from 60g/m<sup>2</sup> to 250g/m<sup>2</sup> (40# offset to 90# cover)  
Range of formats from 4" x 4" up to 20" x 28"

# GREMSEY

## FG – Data sheet

	FG36	FG49
Width	4" to 15"	4" to 20"
Length	4" to 21"	4" to 28"
Range of format	DIN A6 to B3	DIN A6 to B2
Material	60gsm to 250 gsm 40# offset to 90# cover	
Speed	100 to 520 feet per minute	
Performance	400 sheets/minute or 24,000 sheets/hour	
Procedure	Single sheets controlled by Vacuum wheel	
Equipment	TK-HS separation head with a single vacuum cup, Vacuum wheel with air valve	
Pile Height	Up to 19-1/2"	
Pile Weight	Up to 400 pounds	
Exit height	33" / 37" / 41" / 45" / 49" ± 1" (Standard)	
b- Overall width	22"	26"
l- Overall length	27"	34"
h- Overall height	Exit height +13"	



# GREMSEER

## FG – Description

Standard Equipment	
	Coated vacuum wheel, 4" diameter, 1-3/4" width
	Rear of sheet separation device, TK-HS with vacuum cup
	Manual height adjustment for separation head TK-HS
	Rotary vane air pump, model KLT40, for pressure and vacuum
	Ultra sonic double sheet detector
	Line 220V +/- 10% 50/60 Hz, L <sub>1</sub> , L <sub>2</sub> , L <sub>3</sub> , PE
Option	
	Preloading cart
	Mobil base
	Left and right side air blowers at the lead edge of the pile
	Register table in place of belted exit conveyor, model SAT50 or SAT70
	Wired for independent use, with inverter drive
	Line 230/400V 50Hz, L <sub>1</sub> , L <sub>2</sub> , L <sub>3</sub> , N, PE

Specifications are subject to change without notice